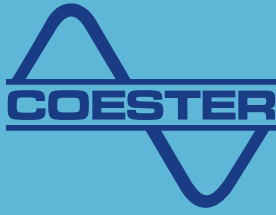


The background of the entire page is a photograph of industrial equipment, specifically several Coester pressure transmitters mounted on pipes. The image is tinted with a blue color scheme. A semi-transparent blue rectangle is overlaid on the left side, containing the text and logo. A solid orange horizontal bar is positioned below the main title.

GENERAL CATALOG

INNOVATIVE
SOLUTIONS
IN AUTOMATION





INNOVATING TO DEVELOP

“Individual well-being is only possible where there is collective well-being. Therefore, each enterprise must serve society before it can use it.”

The continuing challenge of Coester Automação is to commit to research and innovation, believing in education and knowledge as tools to create conditions of technological development in Brazil while establishing partnerships with universities and entities, generating and maintaining qualified jobs and competitive conditions for industry, and leading an important part of the local production chain.

The environmental issue is also part of the company's strategic principles. A technological environment and environmental quality are harmonized in Coester's growth rate.

For over 60 years of existence, the company prides itself on having a qualified and committed team with results, and for keeping active employees in its staff since its foundation.

To achieve superior performance in relation to the quality of its employees, Coester Automação continually invests in its human resources. This possibility of permanent employee growth has become the company's culture, making a difference in deciding its future.

DIRECT 1/4 TURN ACTUATORS

APPLICATION

Ball valve, butterfly valve, damper and similar units.

With the Split system, even when the actuator is removed, the valve keeps the guaranteed manual drive and position indicator.



CSM 6/16 SPLIT

Patent-Protected

Torque with Direct Drive: up to 60 / 160 Nm

Time: 10 to 22 s

Engine Power: 0.040 to 0.064 kW

Coupling: ISO 5211 – F05 and F07

Certification: Ex d IIC T6 Gb IP66/68

Protection: IP68 (144 h – 5.5 m)

Control Options: Standard / Integral / Integral Modulating / Intelligent

Mechanical Position Indicator: Slider mounted on the bottom of the actuator

Manual System without Lever (always active)



CSM 40/60/80/120 SPLIT

Patent-Protected

Torque with Direct Drive: up to 1,000 Nm

Time: 11 to 80 s

Engine Power: 0.045 to 0.400 kW

Coupling: ISO 5211 – F10 and F12

Certification: Ex d IIC T6 Gb IP66/68

Protection: IP68 (144 h – 5.5 m)

Control Options: Standard / Integral / Integral Modulating / Intelligent

Mechanical Position Indicator: Directly connected to the output sleeve

Manual System without Lever (always active)



CSM 6/16

Patent-Protected

Torque with Direct Drive: up to 60 / 160 Nm

Time: 11 s or 22 s

Engine Power: 0.040 kW

Coupling: ISO 5211 – F05 and F07

Protection: IP68 (144 h – 5.5 m)

Control Options: Standard / Standard with 4 mA to 20 mA

Mechanical Position Indicator: Slider mounted on the bottom of the actuator

Manual System without Lever (always active)

DIRECT MULTI-TURN ACTUATORS



CSR 06/12/25 M

Patent-Protected

Torque with Direct Drive: 20 to 250 Nm

Torque with Multi-Turn Gearbox: up to 1,700 Nm

Torque with 1/4 Turn Gearbox: up to 50,000 Nm

Rotation: 20 to 195 rpm

Engine Power: 0.37 to 2.2 kW

Coupling: ISO 5210 – F10 / F14

Certification: Ex d IIC T6 Gb IP66/68

Protection: IP68 (144 h – 5.5 m)

Control Options: Standard / Integral / Integral Modulating / Intelligent

Mechanical Position Indicator: Dial type

Manual System without Lever (always active)

APPLICATION

Gate valve, globe valve, floodgate and similar units.



CSR 6/16 T

Patent-Protected

Torque with Direct Drive: 20 to 160 Nm

Torque with Multi-Turn Gearbox: up to 560 Nm

Torque with 1/4 Turn Gearbox: up to 30,000 Nm

Rotation: 4 to 146 rpm

Engine Power: 0.12 to 0.37 kW

Coupling: ISO 5210 – F10 / F14

Protection: IP68 (144 h – 5.5 m)

Control Options: Standard / Integral / Integral Modulating / Intelligent

Mechanical Position Indicator: Dial type

Manual System with Automatic Decoupling



CSR 50 M

Patent-Protected

Torque with Direct Drive: up to 650 Nm

Torque with Multi-Turn Gearbox: up to 5,160 Nm

Torque with 1/4 Turn Gearbox: up to 50,000 Nm

Rotation: 20 to 195 rpm

Engine Power: 2.2 to 4.5 kW

Coupling: ISO 5210 – F16

Certification: Ex d IIC T6 Gb IP66/68

Protection: IP68 (144 h – 5.5 m)

Control Options: Standard / Integral / Integral Modulating / Intelligent

Mechanical Position Indicator: Dial type

Manual System without Lever (always active)

GENERAL CHARACTERISTICS OF THE ACTUATORS

- Tempered glass display;
- LCD graphic display;
- Non-intrusive pushbuttons;
- Rotating panel (360°);
- Possibility of remote panel and/or electrical box installation;
- No plastic parts on the panel;
- Copper-free aluminum;
- Dual sealing;
- Load cell for continuous torque measurement;
- Absolute position sensor;
- Engine drive safety system – MotorGuard;
- Event log – LiveMem;
- Permanent lubrication;
- Option including powering by solar energy and communication by Mobile Network or Radio Modem;
- Support for more than 30 wired and wireless industrial network protocols.

1/4 TURN GEARBOX



1/4 TURN GEARBOX / ADAPTER

(MOD. RS50 and RS100)

Composed of a worm gear crown-type transmission system, mechanical stops with adjustable stroke from 0° to 90°.

Maximum Torque: 500 / 1,000 Nm

Flange: ISO 5211 – F10 / F12

Maximum Shaft Diameter: 38.1 / 54 mm

Housing: Nodular cast iron housing

Lubrication: Permanent in grease bath, allowing operation in any position.



1/4 TURN GEARBOX / ADAPTER

(MOD. RS600, RS1825(G), RS3030(G) and RS5035(G))

Composed of a scotch-yoke transmission system and optional gearbox module (G) composed of planetary gears; adjustable mechanical stops with adjustable stroke from 0° to 90°.

Maximum Torque: up to 50,000 Nm

Flange: ISO 5211 – F16 / F25 / F30 / F35 / F40

Maximum Shaft Diameter: 160 mm

Housing: Nodular cast iron housing

Lubrication: Permanent in grease bath, allowing operation in any position.

MULTI-TURN GEARBOX



PARALLEL INTERMEDIATE GEARBOX

(MOD. RR10, RR20, RR40 and RR40E)

Composed of a parallel-gear mechanical transmission system.

Maximum Manual Torque: 1,100 Nm

Maximum Engine-Driven Torque: 5,160 Nm

Flange: ISO 5210 – F16 / F25 / F30

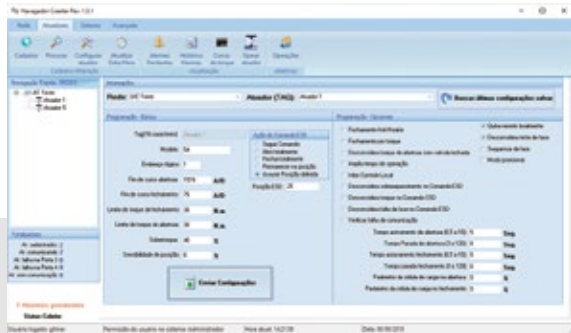


Maximum Rod Diameter: 60 to 80 mm

Housing: Nodular cast iron housing

Lubrication: Permanent in grease bath, allowing operation in any position.

NAVEGADOR II



Software for actuator configuration and control for MS Windows. It features configurable alarms and allows diagnosing actuator failures and communication networks and formatting operational databases.

It offers predictive maintenance of the valves based on the torque curve history.

NETMASTER II MASTER STATION



Its function is to control the communication network and concentrate system data.

It also functions as a Bus Interface Unit (BIU), remote operation interface, and interface with supervisory control systems.

Designed for aggressive environments, it is fully built in solid state. It allows network topology with ring redundancy and the use of two NetMaster II units in hot redundancy for high-availability systems, supporting up to 200 actuators.

CONNECTORS FOR INDUSTRIAL NETWORKS

Connectors for industrial networks (patent-protected) certified for use in hazardous areas, which allow the connection/disconnection of hot devices/networks, without opening the housing.

Housing with full water sealing even under immersion (IP67), made of copper-free aluminum alloy, suitable for high-salinity areas.



CONTACT FREE

Patent-Protected

Optically isolated, it reduces the risk of atmospheric discharge in the network and ground current flow between units.

Zero Stub Length (Profi bus-DP/DPV1)/RS485.

Ex emb IIC T6 Gb IP67 certification.



HOT DISCONNECT

Patent-Protected

Electrical connection not requiring the use of a power source. It functions as a network branch with Ex emb IIC T6 Gb IP66/67 certification.

IHM FX5 / FX7 / FX10



It is a communication interface with COESTER actuators capable of controlling up to 60 actuators in a Modbus RTU and/or Modbus/TCP network.

Equipped with a touchscreen and an intuitive graphical user interface, it facilitates the operation of actuators in places of difficult access and allows the visualization of position status, torque, and all alarms available in the actuators. In the remote communication mode, it allows other devices such as computers and smartphones to operate the HMI anywhere with access to the HMI network, allowing control and interlocking of devices.

MB BOX



It transforms YOUR standard actuator into a Intelligent unit, guaranteeing the standardization of the plant. Ability to connect any type and brand of standard actuator in Modbus RTU or Modbus/TCP networks.

COESTER SERVICES

Coester has a structure that includes technicians and engineers located in its plant in São Leopoldo, RS, in addition to an authorized technical assistance network distributed across several states, totaling more than 15 companies, with more than 25 professionals.

DIFFERENTIATORS

- Professionals certified by the Profibus Association and able to perform maintenance and certification of Profibus-DP/DPV1 networks;
- Specialists in the fields of mechanics, electrical components, instrumentation and automation, with periodic recycling;
- Large inventory of spare parts;
- Training center with periodic courses;
- Service workshop and specialized professionals;
- Compliance with the main Regulatory Standards (NRs), such as NR10 and NR20.

MAIN SERVICES:

- Technical assistance: field and factory maintenance;
- Field survey, review, pre-operation, and assisted operation;
- Application engineering;
- Consulting, implementation and maintenance of automation systems;
- In-company and in-factory training.

INNOVATIVE
SOLUTIONS
IN AUTOMATION

capella



www.coester.com.br

info@coester.com.br

+55 51 **4009.4200** | **99282.0427**

São Paulo +55 11 98962.1755

Rua Jacy Porto, 1157 - São Leopoldo/RS - Brazil - CEP 93025-120



/coesterautomacao



/company/coester-automation

